

## IMPORTANT

Please ensure your machine is installed as per the instructions received on top of the machine, before referring to this Quick Guide.

Follow the steps to connect the **Candy simply-Fi** App to your washing machine

To use all of the App's functions you will require NFC technology to connect your mobile phone to the machine.

**NOTE** only ANDROID operating systems currently support NFC connection.

**Apple devices do not currently support NFC connection.**

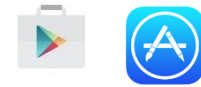
**NOTE** – If your device does not have NFC you can still register your machine by following the process changing steps 7 & 8 for steps 7 and 8 (No NFC). However you will not be able to interact with the machine, only see the contents of the app.

Android smartphone with NFC technology	Interaction with the machine + contents
Android smartphone without NFC technology	Contents only
Android Tablet	Contents only
Apple iPhone and iPad	Contents only

## Step 1

You will need a home internet network or mobile data enabled on your phone in order to download the App and register the appliance.

To download the App. Open "play store/google play (android) or app store (IOS)" and search for '**Candy simply-Fi**'



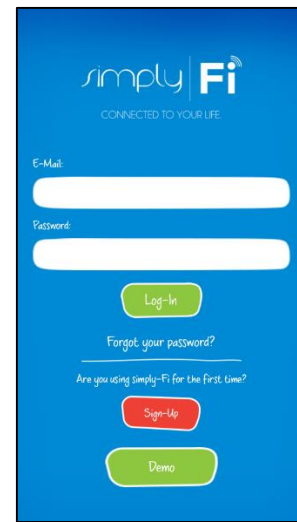
**NOTE** – The App is available for Android (version 4.4 or higher) And iOS (version 8.0 or higher) devices.

Note: Placing the phone on the one touch icon with NFC activated will open the [candysmarttouch.com](http://candysmarttouch.com) mini site. From this site there is a link to download the App from the play store.

What is NFC?

**Near field communication (NFC)** is a means of communication that enables two electronic devices, one of which is usually a portable device such as a smartphone, to establish communication by bringing them in contact with each other.

## Step 2

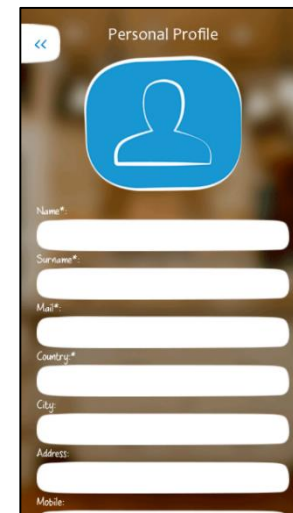


If your phone has an NFC connection feature ensure it is switched on, open the "**Settings**" menu of your phone and activate the NFC function in the '**connections**' menu, go back into the Wizard app.

If you are unsure how to activate NFC refer to your phone help guide.

Open the **Candy simply-Fi** App. If you are using simply-fi for the first time, create your user profile by tapping on "**Sign-up**".

## Step 3



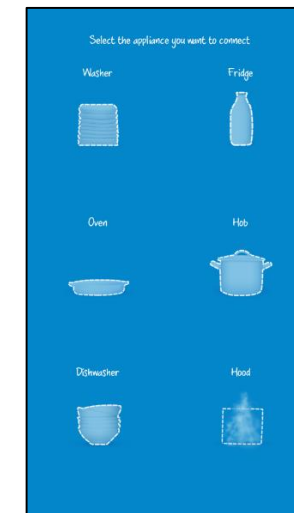
Enter your details including an email address and password.

**NOTE:** you will be required to tick 3 boxes to acknowledge acceptance of the terms of Usage. These are shown under the "show and Accept" button. Scroll up and down to read all the text and accept.

Once complete tap on the "Sign Up Button"

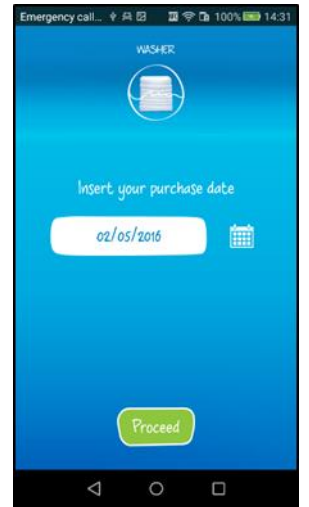
Tap on "Yes Start" to start using it.

## Step 4



In the homepage, tap on the Washing Machine icon, and then press "**Yes**".

## Step 5



Insert the purchase date of your appliance (DD/MM/YYYY), then tap on "**Proceed**".

## Step 6

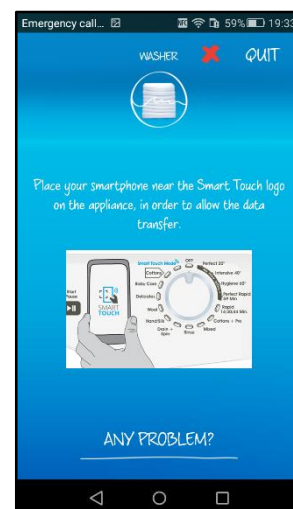


Go to your washing machine and look for the **Smart Touch** logo found on the control panel. If you can see the logo tap the button 'yes I can see the logo'.

Note: If your phone is in a case it may need to be removed to connect correctly.

If your device is not an android phone with NFC proceed to **Step 7 (No NFC)**

## Step 7

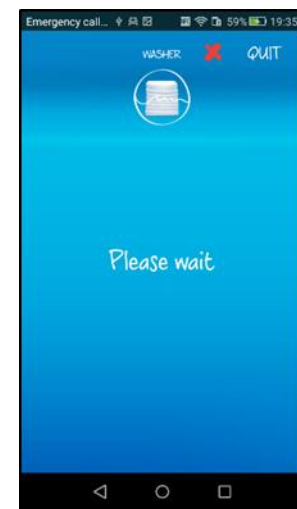


Place your smartphone near the **Smart Touch** logo on the control panel of the Washing Machine, in order to get the product serial number.

**NOTE** – If you do not know the position of the NFC antenna, slightly move the smartphone in a circular motion over the **Smart Touch** logo until the App confirms the data transmission. You may need to remove the case.

If you have problems in succeeding, simply repeat the procedure or continue by manually typing the serial number of the Washing Machine. Tap on "**Any problems?**"

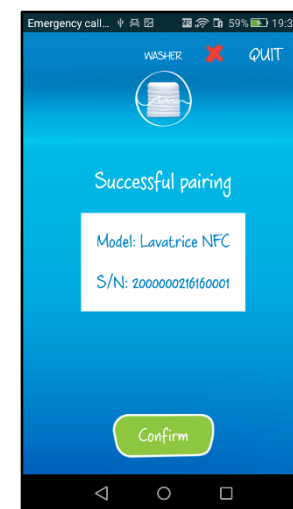
## Step 8



Please wait until the end of the data transfer, without moving the smartphone from the **Smart Touch** logo (just a few seconds).

Go to **Step 9**

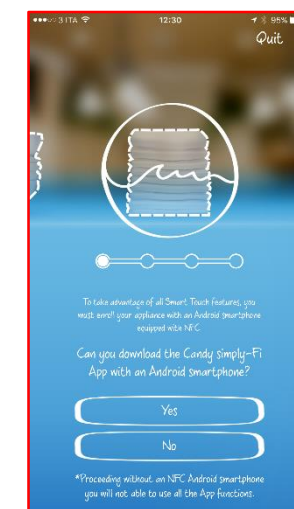
## Step 9



A screenshot will summarize the serial number and the model name of your Washing Machine.

Tap on "**Confirm**".

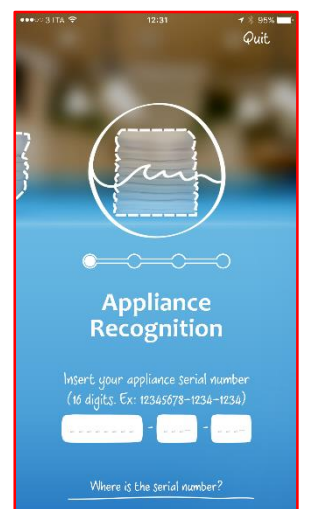
## Step 7 (No NFC)



If you are registering the appliance with a non NFC-equipped device, a screenshot will invite you to stop the procedure, and to resume it on an Android smartphone equipped with NFC technology.

In case you don't have this feature, tap on "**No**".

## Step 8 (No NFC)



Manually input the 16-digit serial number that you can find on the label placed in the door recess, open the door to see it.



Tap on "**Proceed**".  
Go to **Step 9**

## VOICE ASSISTANT

Prior to using the voice coach refer to the quick guide overleaf to install the app

This section of the Quick Guide explains how to use the **Voice Assistant**, the smart function which suggests that you, after three easy vocal inputs:

1. Clothes or Fabrics
2. Colours
3. Stain level

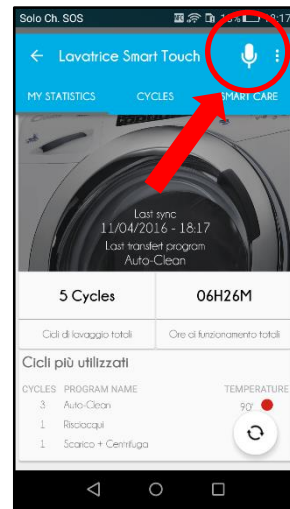
Can select the best washing cycle for your needs.

**NOTE - The Voice Assistant function is available only by using the Candy simply-Fi App with an Android smartphone equipped with NFC technology.**

Remember to activate the NFC function in the “Settings” menu of your Smartphone and to have a working internet connection.

The activation process of the NFC function may differ, according to the smartphone model and the Android operating system version. For further details, please check the user manual of your smartphone.

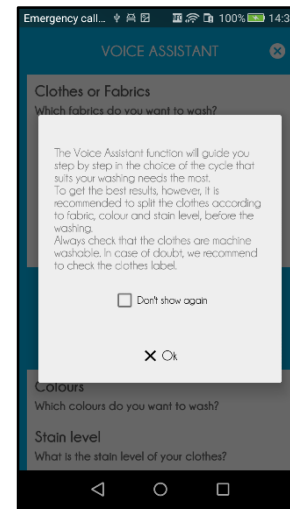
### Step 1



Register your **Smart Touch** Washing Machine on the App, as explained on the first page of this Quick Guide.

Enter the Washing Machine menu in the **Candy simply-Fi** App, then tap on the microphone icon in the top right corner of the display.

### Step 2

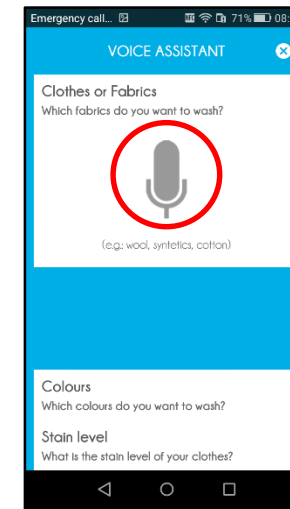


Read the screenshot with the general instruction on the use of the Voice Assistant function, then tap on “Ok”.

Prepare the clothes that you want to wash.

**NOTE - In order to get the best washing results, we recommend you to sort the clothes according to the different fabrics, colours and stain levels. Also check that they are machine washable. In case of doubt, please refer to the wash care label on the clothes.**

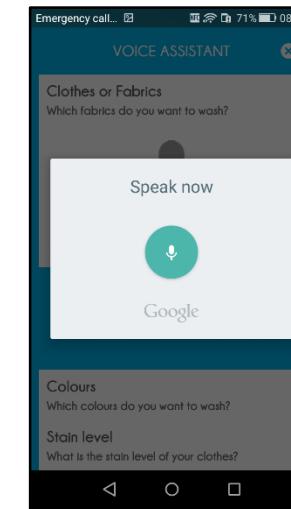
### Step 3



Tap on the microphone icon.

**NOTE - The Voice Assistant system can only recognize the words of the vocabulary used in the language set on your smartphone.**

### Step 4

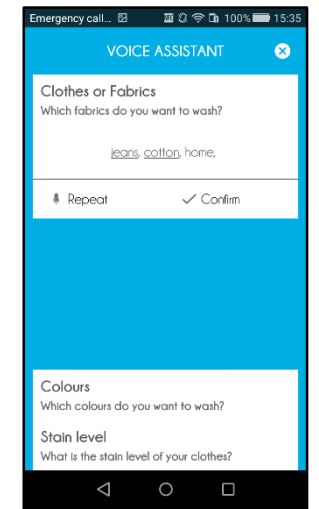


When the screen shows the message “Speak now”, pronounce in sequence all the clothes or fabrics that you want to wash, without pauses or further details.

At the end of the dictation, the system will automatically move to the next passage.

**NOTE - Background noises or any pauses during speech may cause the app to not recognize your voice.**

### Step 5



Only the words that have been clearly understood by the system will appear on the display. Among these words, only the underscored ones will contribute to the definition of the recommended washing cycle suggestion.

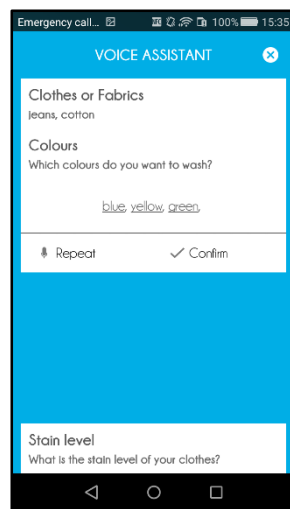
**Example:**

- You speak: “Jeans, Cotton, Home”
- It shows: “Jeans, Cotton, Home”

Only “Jeans” and “Cotton” will contribute to the definition of the washing cycle; the word “Home”, even if recognized by the system, will be ignored.

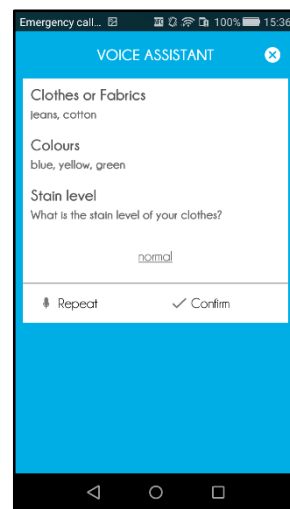
Tap on “Confirm” to accept, or on “Repeat” to speak again the name of the clothes/fabrics, in case of error.

### Step 6



Repeat the procedure followed in Steps 3/5 for the “Colours” input.

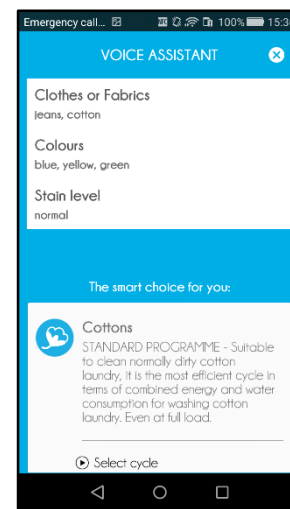
### Step 7



Repeat the procedure followed in Steps 3/5 for the “Stain Level” input.

**NOTE - Pronounce a single Stain Level, common to the entire laundry load. Otherwise, the system will consider only the highest.**

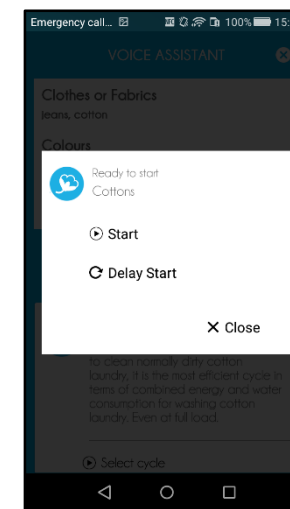
### Step 8



If all the inputs are correct, the **Voice Assistant** will suggest the most suitable washing program for your clothes.

Load the washing machine with your laundry, and close the door, then put the detergent in the relevant compartment of the drawer and turn the knob to the **Smart Touch** position.

### Step 9



In the App, tap on:

- **Start** → to start the cycle immediately
- **Delay Start** → to set a delayed start or finish.

Place the smartphone near the **Smart Touch** logo on the dashboard of the appliance, in order to transfer the data and set the washing machine.

At the end of the washing cycle, please turn the knob to the **OFF** position.

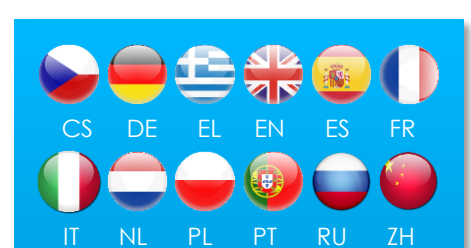
### NOTE

Voice Assistant:

- **THE VOICE ASSISTANT DOES NOT RECOGNIZE ANY INPUT** → Please repeat the words you have spoken, more clearly.
- **THE CLOTHES/FABRICS OF YOUR INPUT ARE NOT COMPATIBLE** → You are trying to wash together too many different kinds of fabrics. Please separate out the delicate items and retry

**THE CLOTHES/FABRICS OF YOUR INPUT ARE VERY DIFFERENT FROM EACH OTHER** → The suggested cycle will wash your clothes, but in order to guarantee the best washing performances, we suggest you separate delicate items and clothes and repeat the whole procedure.

### Other Quick Guide languages



<http://candysmarttouch.com/quickguide>